



Holden Chapel was built in 1742 as the first chapel at Harvard, and is the third oldest extant building at Harvard. We designed a gut renovation of the interior of this one-room, 260-year old building to create a dual-purpose space. By day it is a classroom; in the afternoons and evenings, it serves as a choral rehearsal hall.

Acoustic design was critical, influencing the treatment of walls and the ceiling, and the design of audio-visual and mechanical systems. The new wall paneling, installed to cover acoustic panels, echoes the interior of the nearby Christ Church by Peter Harrison (1760) with its interior window shutters.

The project included entirely new plumbing, fire protection, mechanical and electrical systems, including the building's first toilets in two and one half centuries. The crawl space was



*continued on next page*

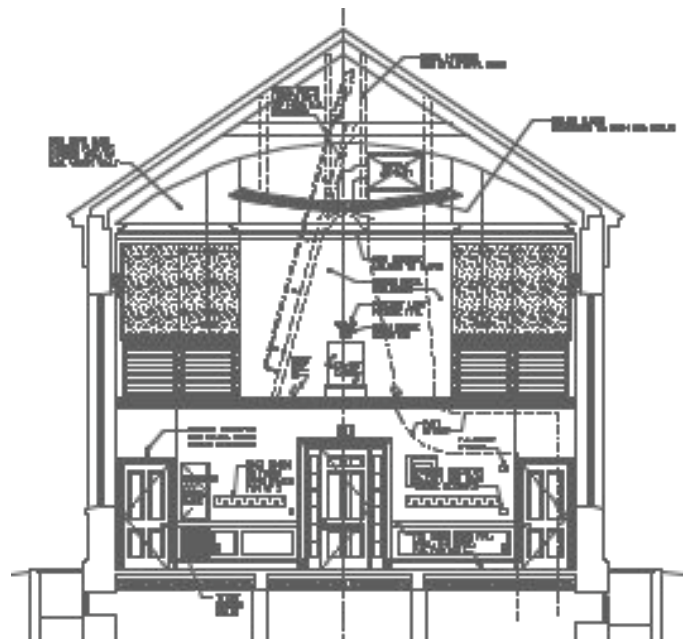


excavated to create a room for mechanical equipment – which unexpectedly resulted in the discovery of human bones and the suspension of construction for an archaeological investigation.

*Completed Fall 1999.*



*Before renovation*



*Construction documents section*